



Homecross House, London, W4 1YA

RETIREMENT FLAT - A newly-renovated, ground floor apartment with direct access to communal gardens located in this sought-after retirement complex in the centre of Chiswick close to shops and transport. The accommodation comprises a spacious 18'9" reception room with a door onto the communal garden and lovely views over the common, a newly fitted Nobilia German kitchen, with dishwasher, internal bin and quartz worktop with quartz full upstands, a brand new bathroom with a walk-in shower, a double bedroom with a fitted wardrobe and views onto the garden, and an entrance hall with a generous storage cupboard. Communal facilities include a large resident's lounge, private gardens, laundry room, lift access, residents off street parking, house manager and emergency response cover. Homecross House is located just north of Chiswick High Road offering close proximity to shops, cafes, restaurants, parks, two tube stations and numerous bus routes. EPC-E. Hounslow Council Tax Band D. Available now.

- Newly renovated ground floor apartment
- Newly fitted Nobilia German kitchen
- Direct access to communal gardens
- Views over Chiswick back common
- Residents lounge and house manager
- Available now

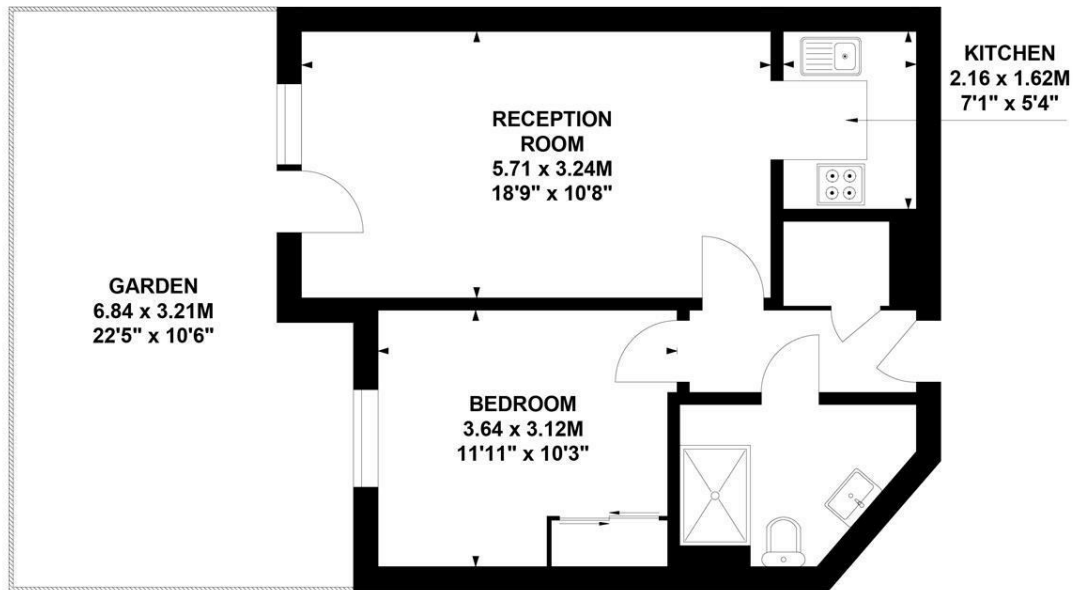
£1,650 Per Calendar Month



Homecross House, W4

Approximate Gross Internal Area
44.5 sq m / 478 sq ft

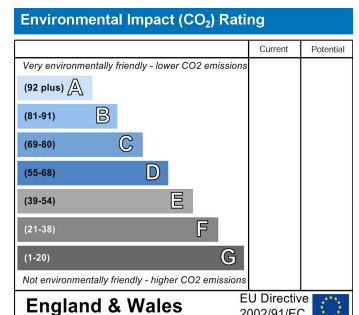
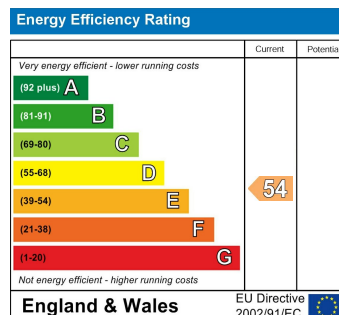
Key :
CH - Ceiling Height



Ground Floor

Not to scale, for guidance only and must not be relied upon as a statement of fact.
All measurements and areas are approximate only

Local Authority - Hounslow
Council Tax - Band D



5-7 Turnham Green Terrace, Chiswick, London, W4 1RG

Tel 020 8747 8800

E-mail sales@whitmanandco.com

Website www.whitmanandco.com

PrimeLocation.com

Zoopla.co.uk

rightmove

onTheMarket.com

MISREPRESENTATION ACT 1967

Whitman & Co. for themselves and for the vendors give notice that these particulars do not constitute any part of, an offer of contract. All statements contained in these particulars are made without responsibility on the part of Whitman & Co. or the vendor. None of the statements contained in these particulars is to be relied upon as statements or representations of facts. Any intending purchaser must satisfy himself by inspection or otherwise as to the correctness of each of the statements contained in these particulars. The vendor does not make or give, and neither Whitman & Co. or any person in their employment has any authority to make or give, any representation or warranty whatever in relation to the property.